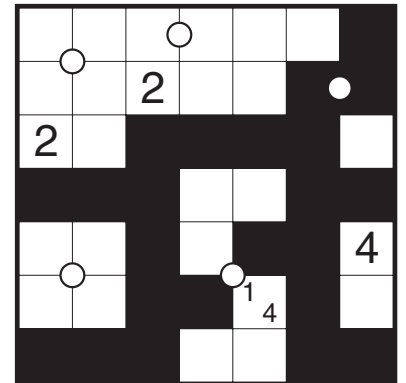
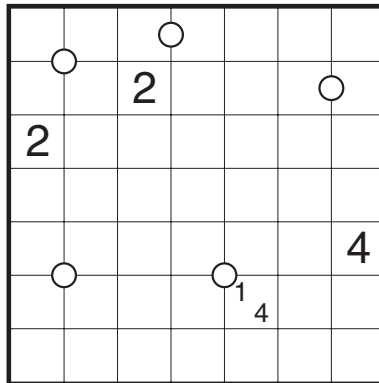


Tapa (Symmetry) by Murat Can Tonta

Rules: Standard Tapa rules. Also, white circles, representing the centers of the largest rectangle containing them, indicate centers of symmetry; both the shaded and unshaded cells within this rectangle must demonstrate rotational symmetry. Rectangles containing different circles can intersect.



Example by Serkan Yürekli

