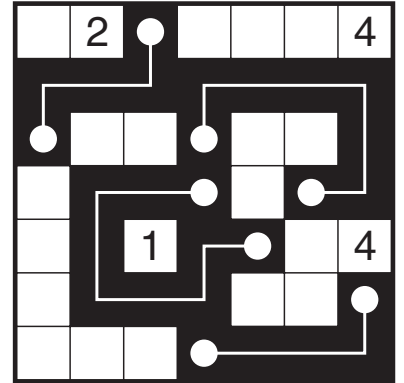
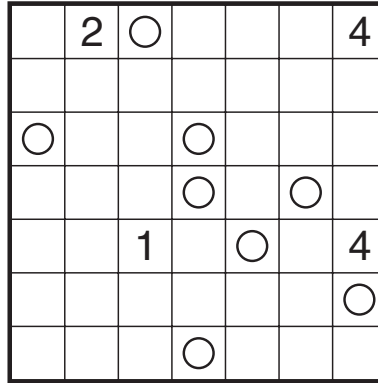
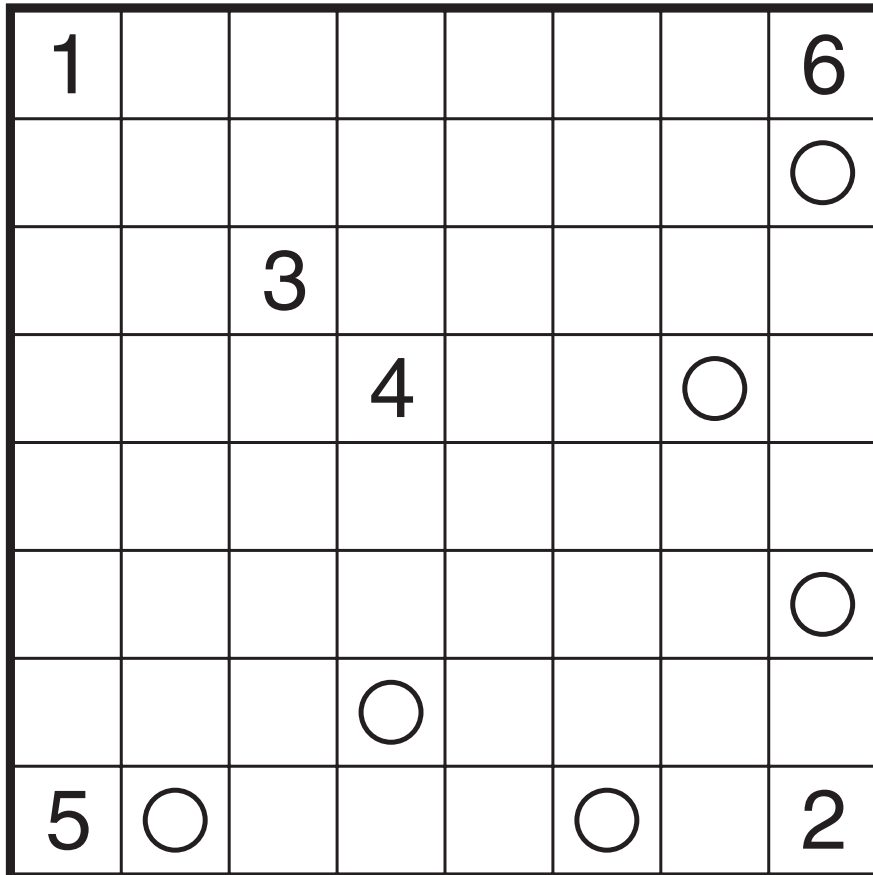


# Golem Grad by Ashish Kumar

Rules: Variation of Nurikabe. Shade some empty cells black so that the grid is divided into white areas, each containing at most one number. A white area with a number must have the same area in cells as that number. White areas may only touch diagonally. All shaded cells must be connected with each other, but no 2x2 group of cells can be entirely shaded. Also, all shaded cells must be divisible into snakes with the heads and tails given in the grid. Snakes cannot cross each other.



Example by Serkan Yürekli



1 to 6