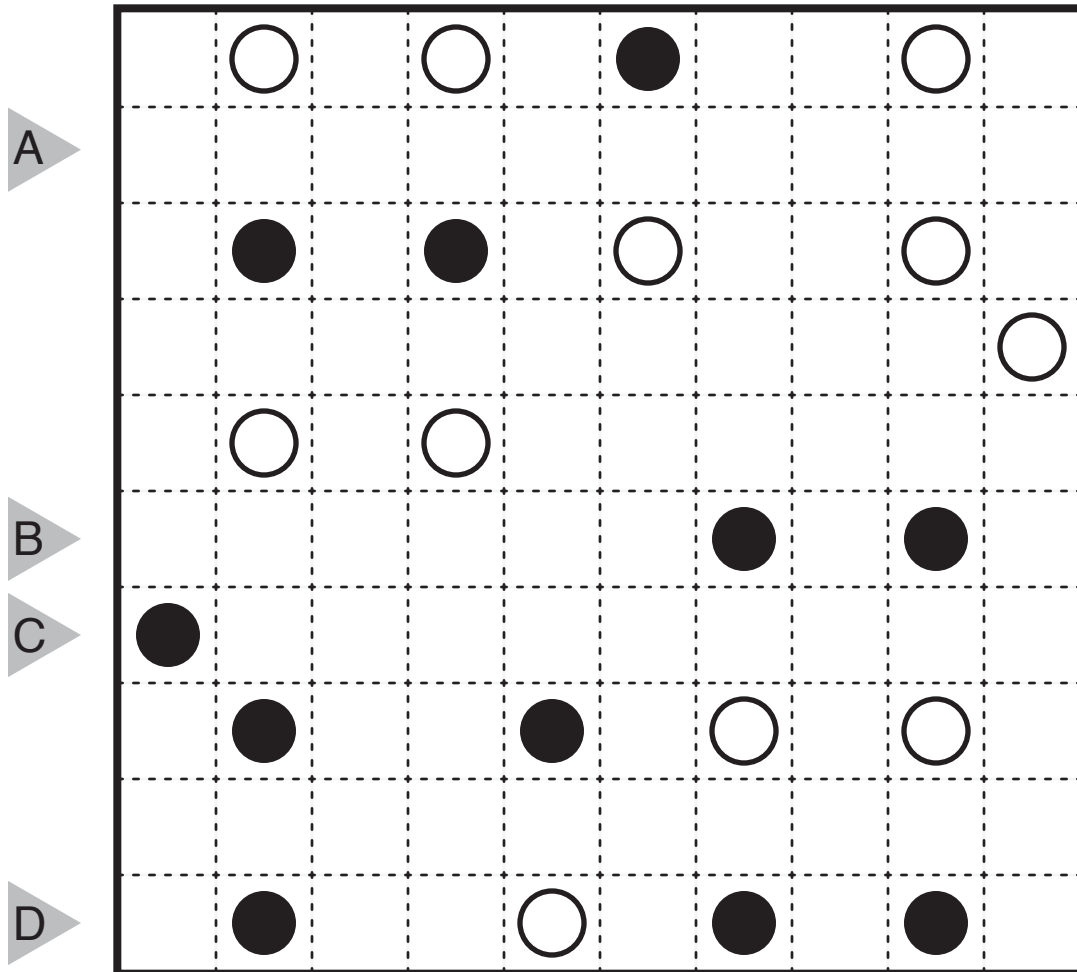
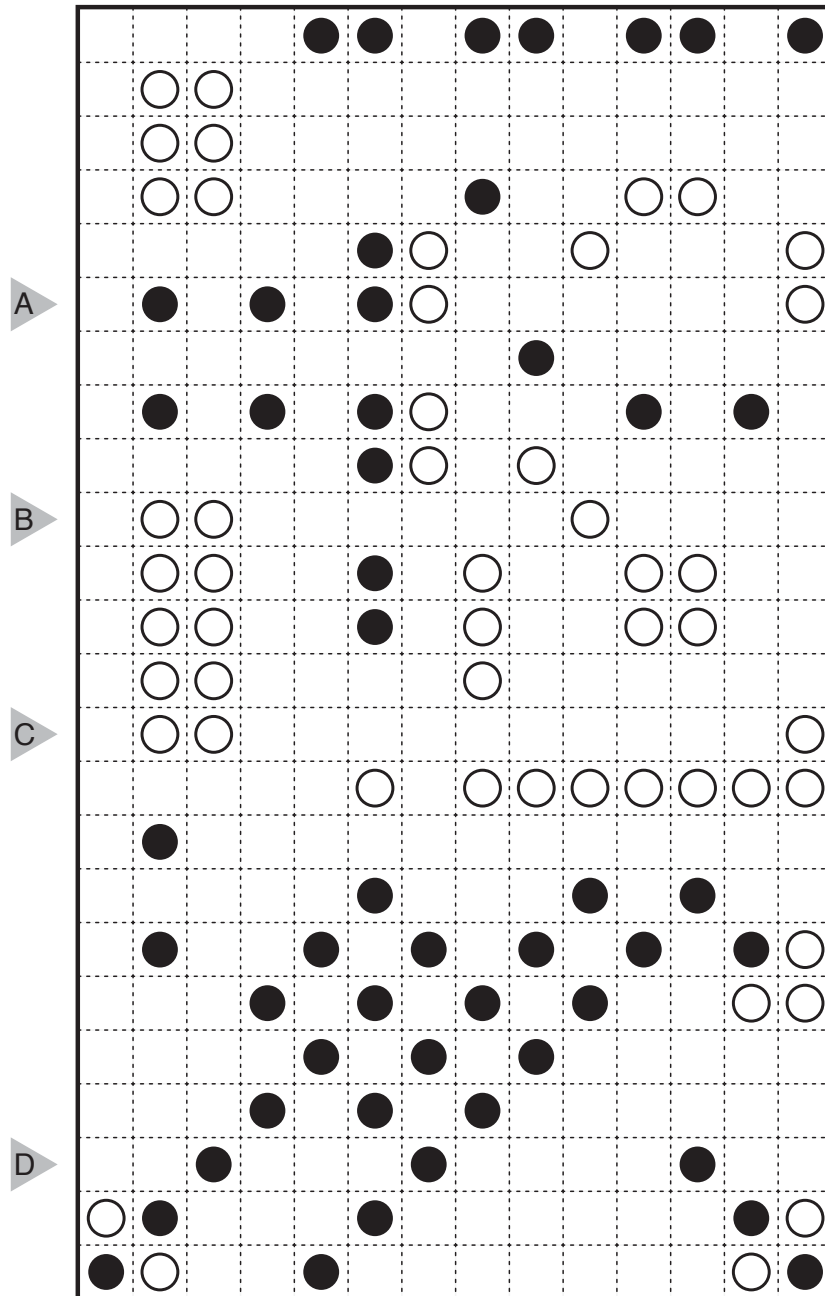


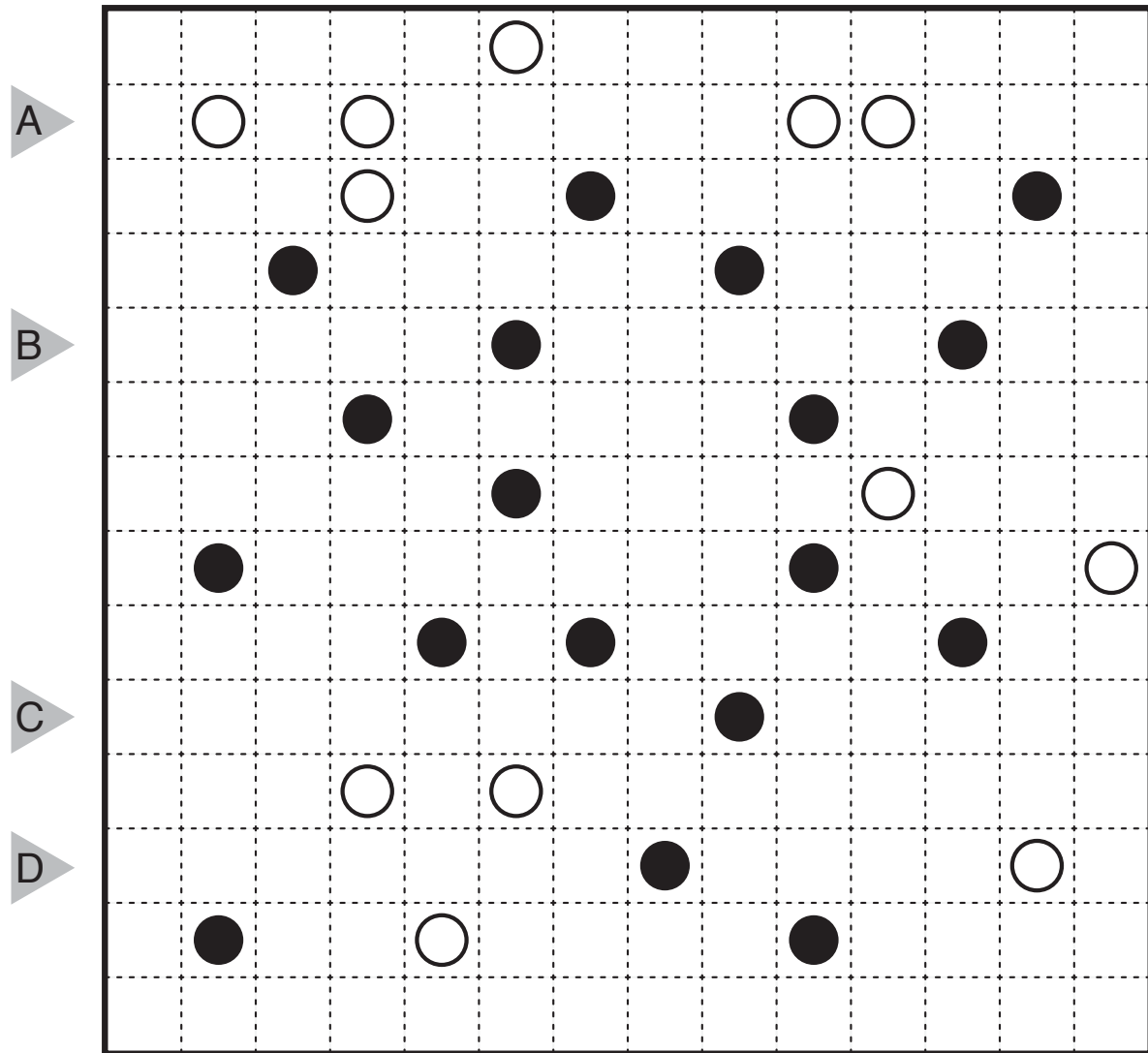
2018/07/09:
Masyu by Tom Collyer
Theme: Antisymmetry



2018/07/11:
 Masyu by Grant Fikes
 Theme: 50/50

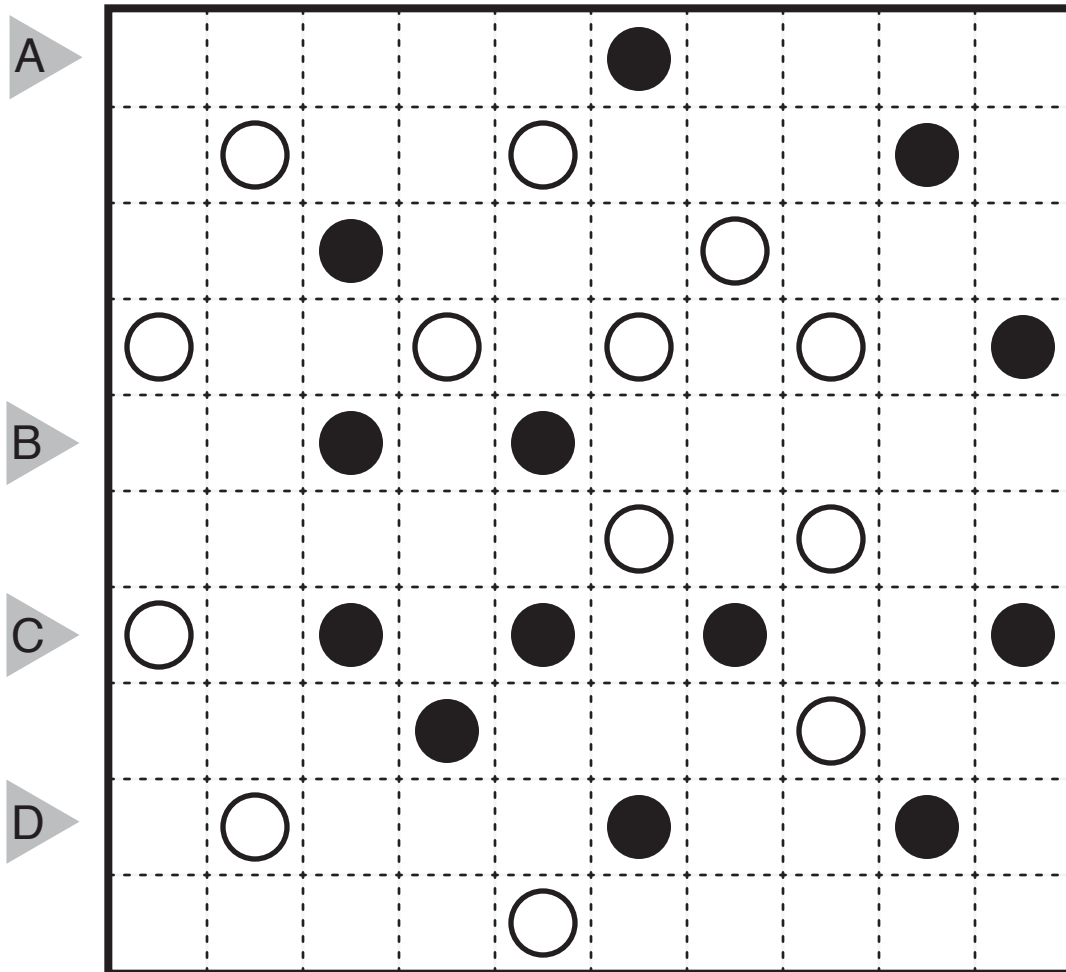


2018/07/12:
Masyu by Murat Can Tonta
Theme: Logical



2018/07/13:
Syuma by John Bulten
Theme: Yin-Yang Swirl

Rules: Variant of Masyu Rules. The loop turns in every black circle and goes straight through **at least one** adjacent square. The loop goes straight through every white circle and turns **in both** adjacent squares.



2018/07/14:
Masyu (Deformable) by Murat Can Tonta
Theme: "You're Surrounded!"

Rules: Standard Masyu Rules. Also, some white circles may be shaded to become black circles.

